

# PLAT No. 2 OF LAKE CRYSTAL

A PLANNED UNIT DEVELOPMENT - P.U.D.

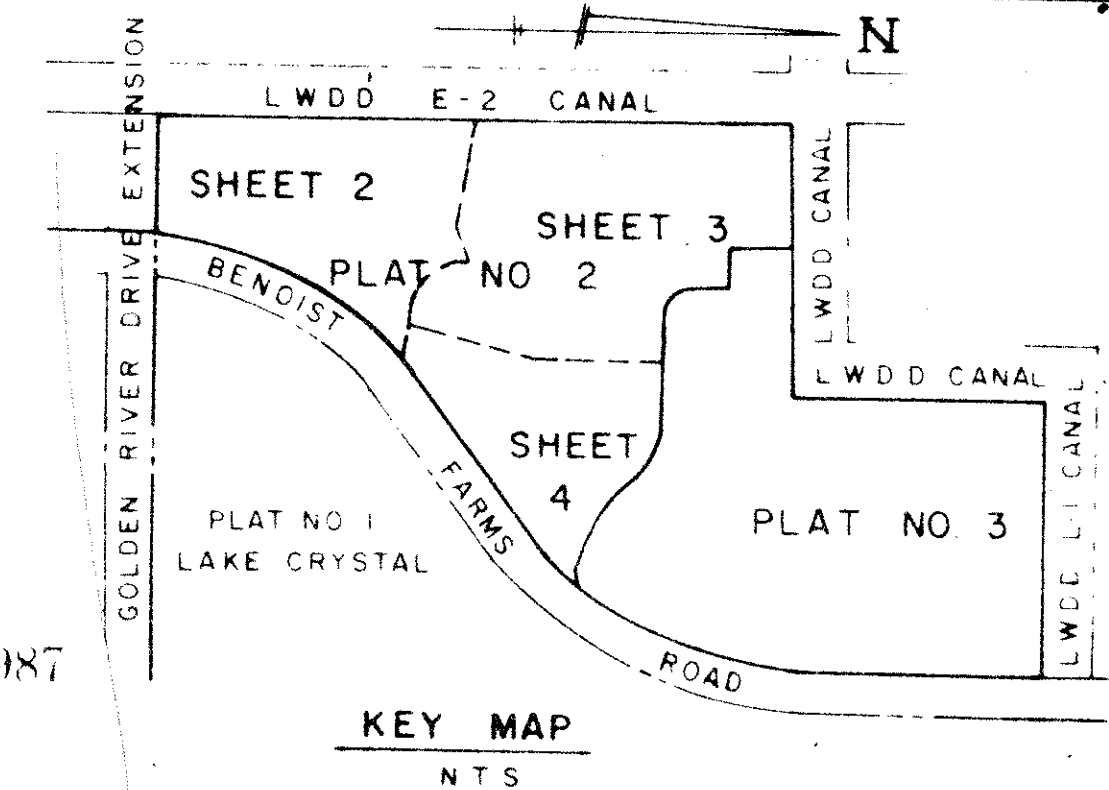
BEING A PORTION OF GOLDEN LAKES VILLAGE, P.U.D.

BEING A REPLAT OF A PARCEL OF LAND LYING IN THE PALM BEACH FARMS COMPANY PLAT NO. 3, AS RECORDED IN PLAT BOOK 2, PGS. 45-54, OFFICE OF PUBLIC RECORDS, PALM BEACH COUNTY, FLORIDA.

SHEET 2 OF 4

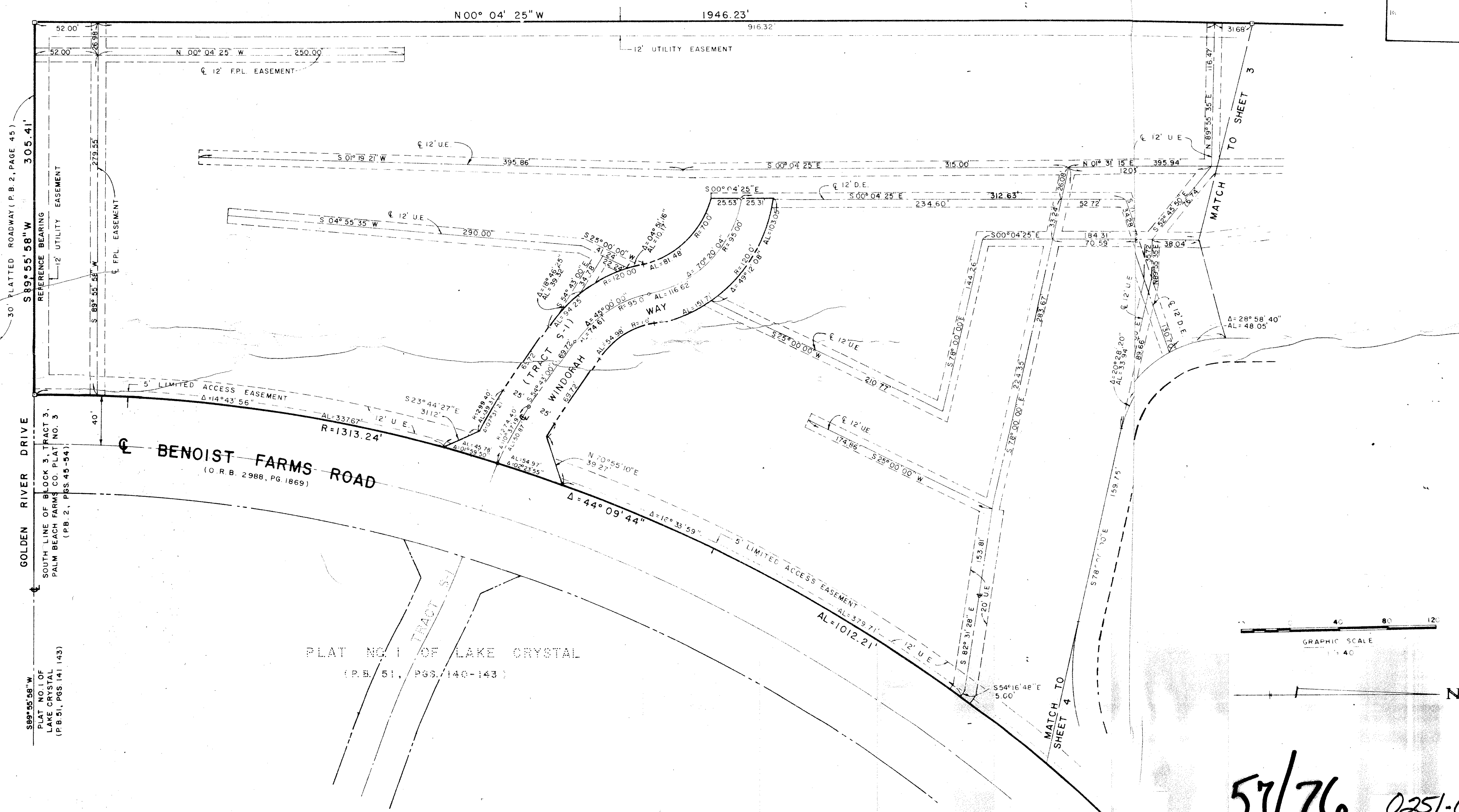
MARCH 1987

L.W.D.D. CANAL E-2 R/W 130' WIDE

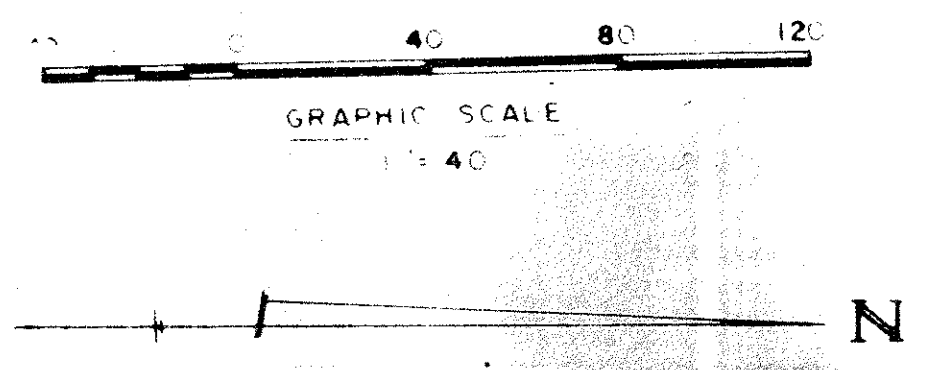


76

OFFICE OF PUBLIC RECORDS  
STATE OF FLORIDA  
Palm Beach County  
1000  
and duly recorded in Plat Book No.  
000000  
JOHN B. DUNKLE, Clerk of Court  
By \_\_\_\_\_



29/14/3/42  
 SUBDIVISION • Lake Crystal 2  
 BOOK 57  
 FLOOD ZONE AN-1 FLOOD MAP • ISDA  
 QUAD • 46  
 SE PUD  
 PUD NAME PUB. Golden Lakes Village  
 TAZ 87E



57/76 0251-013

Field Book No. Pg.	ROBERT E. OWEN & ASSOCIATES, INC.	Job No. 86-1061
Design L. BISPOTT	ENGINEERS - PLANNERS - SURVEYORS	Scale 1" = 40'
Drawn L. BISPOTT	WEST PALM BEACH FLORIDA	Date MARCH, 1987
Checked		Sheet 2 of 4
		File No. BF-2402-A

PLAT NO. 2 OF LAKE CRYSTAL